



# CROSS-DATING TREE-RING SERIES OF LIVING EUROPEAN BEECH BY ISOCHRONIC WEATHER RECORDS

DENISA SEDMÁKOVÁ<sup>1</sup>, RÓBERT SEDMÁK<sup>3,4</sup>, MICHAL BOŠEĽA<sup>2,4</sup>, MAREK JEŽÍK<sup>1</sup>, ROMAN SITKO<sup>3</sup>,  
TOMÁŠ HLÁSNÝ<sup>2,4</sup> and MIROSLAV BLAŽENEC<sup>1,4</sup>

<sup>1</sup>Institute of Forest Ecology, Slovak Academy of Science, Ludovíta Štúra 2, 960 53 Zvolen, Slovak Republic

<sup>2</sup>National Forest Centre, T. G. Masaryka 22, 960 92 Zvolen, Slovak Republic

<sup>3</sup>Faculty of Forestry, Technical University in Zvolen, T. G. Masaryka 24, 960 53 Zvolen, Slovak Republic

<sup>4</sup>Faculty of Forestry and Wood Sciences, Czech University of Life Sciences Prague,  
Kamýčká 1176, 165 21 Prague 6 - Suchdol, Czech Republic

Received 2 February 2015

Accepted 22 January 2016

**Abstract:** The main objective of the study is to facilitate cross-dating of sensitive tree-ring series from living European beech (*Fagus sylvatica* L.) trees in the absence of a regional chronology. The main idea lies in the preliminary dating of marker rings or ring patterns visually identified on the wood (before the ring-width measurements), which is independently validated through a moving correlation between a tentative reference chronology and instrumental climate records (after the ring-width measurements). Following the detection of low moving correlations, potentially misdated segments or series are re-examined and a new tentative reference chronology is constructed. The process is repeated as long as a higher correlation with climate is obtainable. The applicability of this method was investigated on three difficult-to-date sets of tree-ring series of beech trees which were growing at temperature- or precipitation-sensitive locations in under-canopy or canopy positions. A good ability of the combined method for the cross-dating was practiced on datasets almost impossible to cross-date by commonly used approaches. Highlighting the actual correlation of ring widths with climate in tree-ring series makes the cross-dating process more independent from human decisions, so the combined cross-dating has the potential to improve the reliability of various dendrochronological studies.

**Keywords:** dating, temperate forests, sensitive tree-ring series, missing rings, dendroecology.

## 1. INTRODUCTION

Tree-ring widths have globally been used for investigating the impact of environmental factors on tree-growth dynamics such as the rising atmospheric CO<sub>2</sub> concentration (Gedalof and Berg, 2010) and rapid changes in SO<sub>2</sub> and NO<sub>x</sub> air pollution (Bošeľa *et al.*, 2014a) but also for climate reconstructions (Popa and Kern, 2009; Büntgen *et al.*, 2011) and testing vegetation models (Babst *et al.*, 2013).

The reliability of tree-ring widths (TRW) relies on the exact dating of the year of their formation and therefore the correct dating of tree rings is a crucial methodological step in all dendroecological and dendroclimatic studies (Fritts and Swetnam, 1989; Maxwell *et al.*, 2011). Particularly in European temperate forests, where climatic factors are less limiting to tree growth, the measurement of the tree-ring widths and their accurate cross-dating is important to preserve as much of the climatic information as possible with a minimum of “noise” introduced through errors (Holmes, 1983).

The issue is particularly important for diffuse-porous and semi-ring-porous tree species such as European

Corresponding author: D. Sedmáková  
e-mail: [sedmakova@savzv.sk](mailto:sedmakova@savzv.sk)

beech wherein the vessel-size distribution is uniform throughout the year creating tree rings that are difficult to read (Schweingruber, 1988; DeRose and Gardner, 2010). European beech was found to have high a potential for dendrochronological studies (Dittmar *et al.*, 2003; Lebourgeois *et al.*, 2005) due to its widespread distribution, sensitivity to climate and longevity (Di Filippo *et al.*, 2007).

Due to a high degree of uncertainty with the cross-dating process, checking the dating accuracy against independent reference chronologies is highly desirable. With beech, the difficulty often emerges from the fact that as a widespread shade-tolerant tree species it frequently grows in unfavourable environments and/or below the canopy layer of dominant coexisting tree species (e.g. oak, spruce). At the upper distributional limit of beech, cool years with short growing seasons or extreme frost events could lead to the formation of very narrow or even missing rings (Hantemirov *et al.*, 2004). Very hot and dry growing seasons at the lower distributional limit have the same effect. Cross-dating is much easier for dominant or co-dominant trees, often used for climate reconstructions (Briffa *et al.*, 1998). However, when forest growth dynamics and forest production changes are to be studied, the sampling strategy must include trees from the entire forest stand cohort including trees that are suppressed (Nehrbass-Ahles *et al.*, 2014). So far, there is little knowledge on the ability of cross-dating trees from a variety of canopy positions and vigour classes (Lorimer *et al.*, 1999).

In an effort to allow the full utilization of the dendrochronological potential of beech and to contribute to improving the cross-dating process in general, we present a technique where visual dating before measurement is validated by instrumental climate data dated with absolute certainty. The properties and practical applicability

of this method are demonstrated on datasets cross-dated without an independent regional chronology.

## 2. MATERIAL AND METHODS

### Study area

The study area is situated in the upper altitudinal vegetation belt (1300–1450 m a.s.l.) of the Poľana Mountain (48°38'N, 19°29'E), which is part of the Slovak Ore Mts. and belongs to the Western Carpathians. The area is characterized by cold mountain climate with a mean annual temperature of 3.5–4.0°C and an annual precipitation sum of 900–1100 mm. Here, European beech reaches its upper limit and grows mostly under the canopy of Norway spruce (*Picea abies* (L.) Karst.) which is the natural predominant tree species.

The study material was collected in the years 2012 and 2013 at two sites near the top of the Poľana Mt. (Fig. 1). The site Predná Poľana (48°37'46"N, 19°27'44"E - PP) is characterized by less dense spruce-dominated stands overgrowing an abandoned pasture at 1300 m a.s.l. The prevailing south and south-east exposition enables beech ascending to high altitudes in sparse spruce forests.

The site Zadná Poľana (48°28'23"N, 19°29'05"E - ZP) is characterized by a very old closed-canopy primeval spruce forest. The prevailing expositions are east and south-east. Beech occurs sporadically between 1100 and 1200 m a.s.l., i.e. 100–200 metres lower than at the PP site, mostly in patches of subdominant and dominant trees.

### Climate data

Monthly observations of CRU TS3.21 Mean Temperature (0.5° × 0.5° grid interpolated points) covering the time period since 1901 available at KNMI Climate Ex-

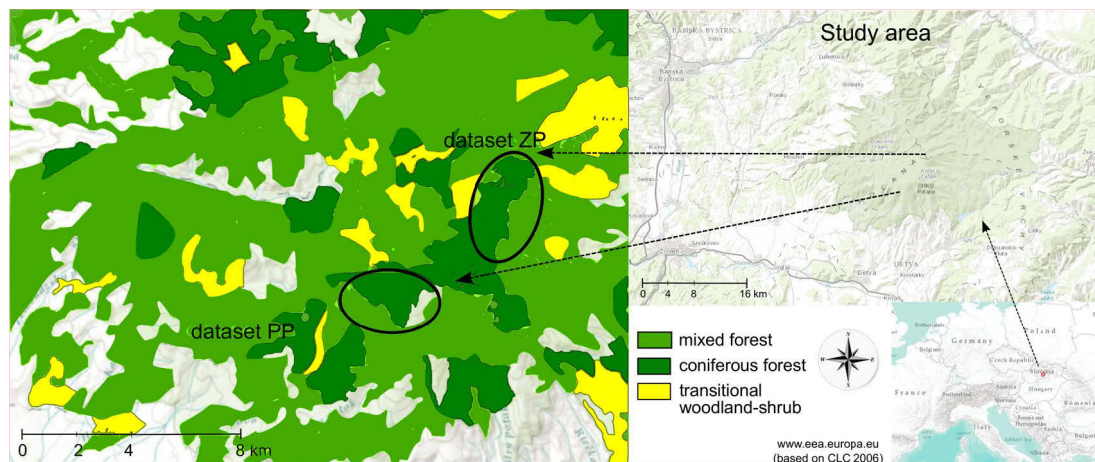


Fig. 1. Location of Slovakia in CE Europe, enlargement of the study area and location of the two study sites Predná Poľana (dataset PP) and Zadná Poľana (dataset ZP), © EEA, Copenhagen, 2012.

plorer (Harris *et al.*, 2014; <http://climexp.knmi.nl>) were selected. To assess the reliability of the CRU data, the annual air temperature time series were compared with the data recorded since 1931 by the meteorological station Sliac about 20 km apart from the study sites (Fig. 2). Although air temperature in the CRU time series was, on average, higher by up to 2°C, but the trend and dynamics of the values of the two datasets were significantly correlated ( $r = 0.96$ ). Due its length, we preferred the CRU TS3.21 record.

### Sampling and tree-ring measurements

Eleven trees (two cores per tree) were sampled at Predná Poľana (dataset PP) and 10 trees (one core per tree) were sampled at Zadná Poľana (dataset ZP). The trees at PP were younger (pith age 60–80 years) than the trees at ZP (pith age 130–170 years). All cores were mounted into 5 mm wooden bars, air-dried and sanded by grain paper (400–600 grain). The TRW were measured to the nearest 0.01 mm with the digital positiometer DAS (Digital Analysis System, Janíček, 1994) and processed by standard methods (Cook and Kariukstis, 1990) using the TSAP-Win software (Rinn, 2003). In addition, at PP, the changes in stem circumference were measured using automatic band dendrometers — DRL 26 (EMS Brno, Cz), installed on three beech trees at 2.5 m above the ground during seven vegetation periods from 2007–2013.

### Cross-dating

Three cross-dating methods were applied: (1) Visual cross-dating by graphical comparison and alignment of individual TRW series (Schweingruber, 1983); (2) dating by skeleton plotting in combination with the memorization method when the visual quality of the study material did not permit the use of simple graphics (Speer, 2010); (3) a new procedure for cross-dating of cores from living trees (referred to as combined dating method) (see Appendix A).

The practical applicability of the combined dating method was tested and validated in separate ways: (i) comparing the dating results by two independent researchers; (ii) comparison with an independent reference chronology for beech growing at its upper limit in the nearby mountain range Vtáčnik (48°38'N, 18°39'E; 1240 m a.s.l.) (Dittmar *et al.*, 2003); validation on an independent dataset (a single stand of beech) and its comparison with a reference chronology (Dittmar *et al.*, 2003) and with a constructed climate reference series, and (iii) indirectly by testing the ability of the new method to reveal visually undetectable micro-rings through micro-sectioning.

### High resolution cross-dating (light microscopy)

Cross-dating of a problematic core using the combined dating approach was verified by micro-sectioning and examination under a light microscope. Thin sections were prepared following Gärtner and Schweingruber (2013). The core was split length wise into 2 parts. The part used for detailed examination was saturated in water and complete cross-section (approx. 20 µm thick) was cut using a GSL1- microtome (Gärtner *et al.*, 2014), and stained with Safranin and Astrablue to increase the visibility of the cell walls and other structural features. These sections were chemically dried with ethyl alcohol and xylene and fixed to a microscope slides using Canada Balsam. The samples were examined under a light microscope. Subsequently, the second part of the core was measured on the digital positiometer.

### Independent dataset

Tree-ring series in a pure beech stand (site Veľké Pole-dataset VP; 48°33.29'N, 18°31.10'E; 500–530 m a.s.l.) in the Štiavnické Mts. were collected from 13 trees in the canopy layer in 2014 (one core per tree either from the north or east exposed side). This 50-year old beech stand down to the east and with an slope of 30° is located

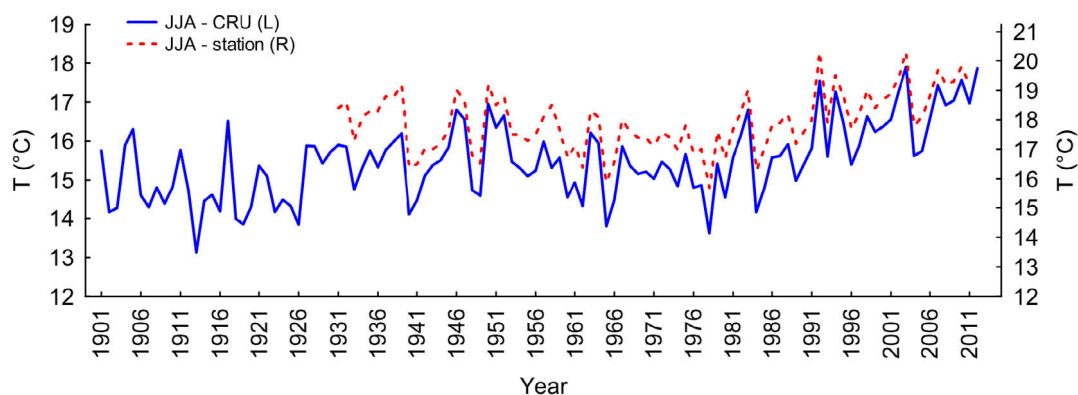


Fig. 2. Interpolated CRU TS3.21 mean temperature data (solid line) to the point of the meteorological station Sliac compared to mean SHMI (Slovak Hydrometeorological Institute) temperature data (dashed line). JJA (June, July and August) temperature was calculated as arithmetic mean of monthly mean temperatures.

at the boundary between the optimum and the lower distributional limit of beech. Monthly observations of CRU TS3.21 Precipitation ( $0.5^\circ \times 0.5^\circ$  grid interpolated points) since 1901, available at KNMI Climate Explorer (Harris *et al.*, 2014; <http://climexp.knmi.nl>) and corresponding to the sampling site, were selected to construct climate reference series (June to August precipitation sums). The reference chronology Žiar n. H./Štiavnické Mts. ( $48^\circ 33'N$ ,  $18^\circ 54'E$ , 600 m a.s.l.) (Dittmar *et al.*, 2003), was used for comparison.

### 3. RESULTS

#### Statistical characteristics of the chronologies after cross-dating

Dendrochronological characteristics such as mean TRW, standard deviation (SD), mean sensitivity (MS), first-order autocorrelation (AC1), series inter-correlation (Rbar), coefficient of coincidence (Gleichläufigkeit GLK%) and expressed population signal (EPS) were calculated for the raw site chronologies using the average of the TRW series at each site after cross-dating (Table 1). Both higher MS and SD values indicate that tree-ring series are very sensitive, i.e. they exhibit a large inter-annual variability of TRW, a higher frequency of irregular growth patterns, completely missing rings or extremely narrow rings (micro-rings) that may hamper the cross-dating. Low AC1 values indicate that the series are not highly auto-correlated which could help facilitate the cross-dating process. Despite a higher sensitivity of individual series and their low number, the rather high values of GLK%, EPS and Rbar indicate successful cross-dating. The resulting chronologies are of good statistical quality and are representative for a common climatic signal recorded for a site (tree species population) in the mean chronology (*sensu* Wigley *et al.*, 1984).

#### Cross-dating by currently used methods

Increment cores from the PP dataset were cross-dated using the graphical comparison method (Schweingruber,

1983). The tentative reference curve was constructed as the arithmetic mean of the individual TRWs for each calendar year from a subset of seven series with the highest inter-series correlation ( $r > 0.6$ ) and the highest coefficient of coincidence (GLK > 80%). The rest of the material was graphically cross-dated with the tentative reference curve. Skeleton plotting, in combination with the memorization method (Speer, 2010), was used for the dataset ZP, in which most cores showed difficult to recognize ring structure and rather poor quality. The tentative reference curve was also constructed from a subset of the seven best measurable series. The comparison of the two reference curves (constructed separately by two independent operators in 2012 and 2013) from two nearby localities showed several apparent inconsistencies in dating of the same marker rings and characteristic ring patterns (visually clearly detectable in both datasets). When the cross-dating of the individual series in both ZP and PP data sets were checked with COFECHA (Holmes, 1983; Grissino-Mayer, 2001), no crucial errors or misdated series were identified.

#### Cross-dating by the combined dating method

As no local tree-ring chronologies were available as independent references, instrumentally measured climate records were taken to check the calendar years of tree-ring formation. We assumed that temperature is the most limiting factor for the growth of beech at its upper distribution limit. According to Ježík *et al.* (2011), the cambium of beech in central Slovakia is active from June to August (Fig. 3) so that this 3-month period of temperature was taken to be correlated with the TRW series ( $r = 0.43$ ). The combined dating method (Appendix A) started with the selection of the seven longest and best measurable series (with the widest rings) from the ZP dataset (group of very old dominant trees at the mountain ridge). After visual dating, synchronization and exact measuring of the TRW of these cores, the preliminary constructed reference curve was checked with COFECHA in order to eliminate possible raw measurement errors. It was then also checked against the inde-

**Table 1.** Basic descriptive statistics of the raw European beech tree-ring site chronologies.

Dataset <sup>1</sup>	Period <sup>2</sup> Length	TRW Mean Min-Max	N	SD	AC(1)	GLK%	MSc%	R-bar	EPS	
							MSs% Mean Min-Max			
PP	1940–2012 73	247 91–383	11 (10)	71.5	0.35	79	34 26–53	27	0.48	0.90
ZP	1857–2012 156	148 45–302	10 (9)	50.4	0.56	77	38 34–50	27	0.56	0.92
VP	1957–2014 58	210 78–328	13 (13)	52.4	0.21	82	31 26–37	26	0.48	0.92

<sup>1</sup>PP — site Predná Poľana, ZP — site Zadná Poľana, VP — site Veľké Pole, <sup>2</sup>Period and length of chronology with sample depth over 4 series; TRW — tree-ring width (1/100 mm); N — number of series, in parenthesis mean number of series in chronology; SD — standard deviation; AC(1) — 1<sup>st</sup> order autocorrelation; GLK% — coefficient of coincidence Gleichläufigkeit; MSc% — mean sensitivity of the chronology; MSs% — mean sensitivity of individual series in %; R-bar — series inter-correlation; EPS — expressed population signal.

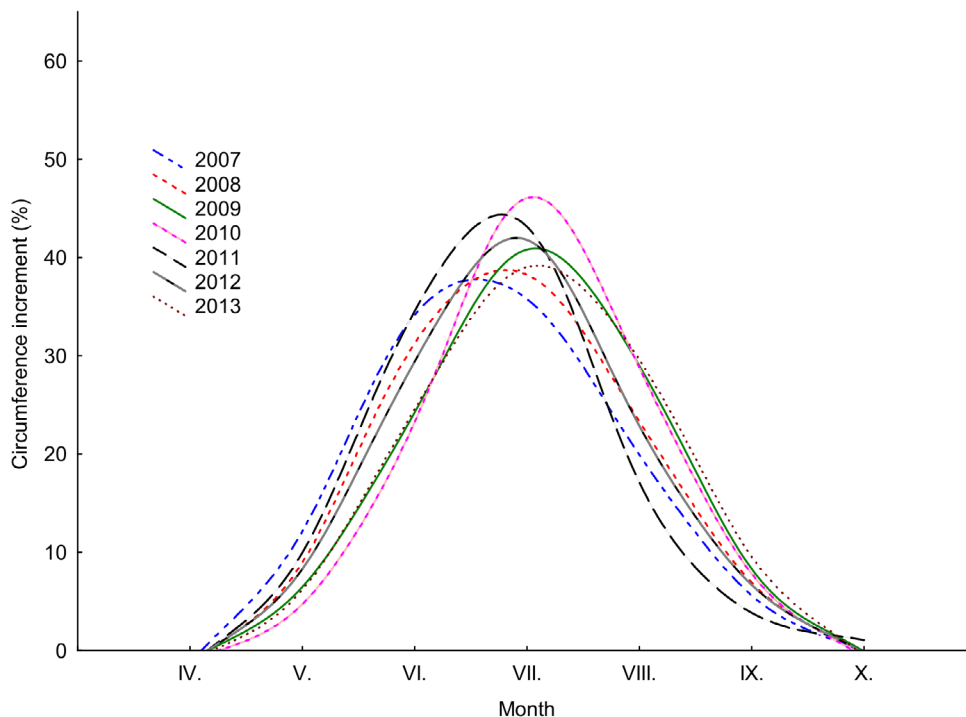
pendent climatic record through moving correlation (30 year moving window). When abnormalities in these running correlations appeared, a re-inspection of the cores was done for possible dating errors. The final dating of marker rings/patterns in the validated tentative reference was recorded. The rest of the series from the ZP dataset and all series from the PP dataset were visually cross-dated using the memorization method in a way that all identified marker rings/patterns were properly aligned to rings in the wood (Yamaguchi, 1991). Finally, all series were measured and additionally checked with COFECHA and corrected for possible mistakes in measurements.

### Testing the quality of the proposed method

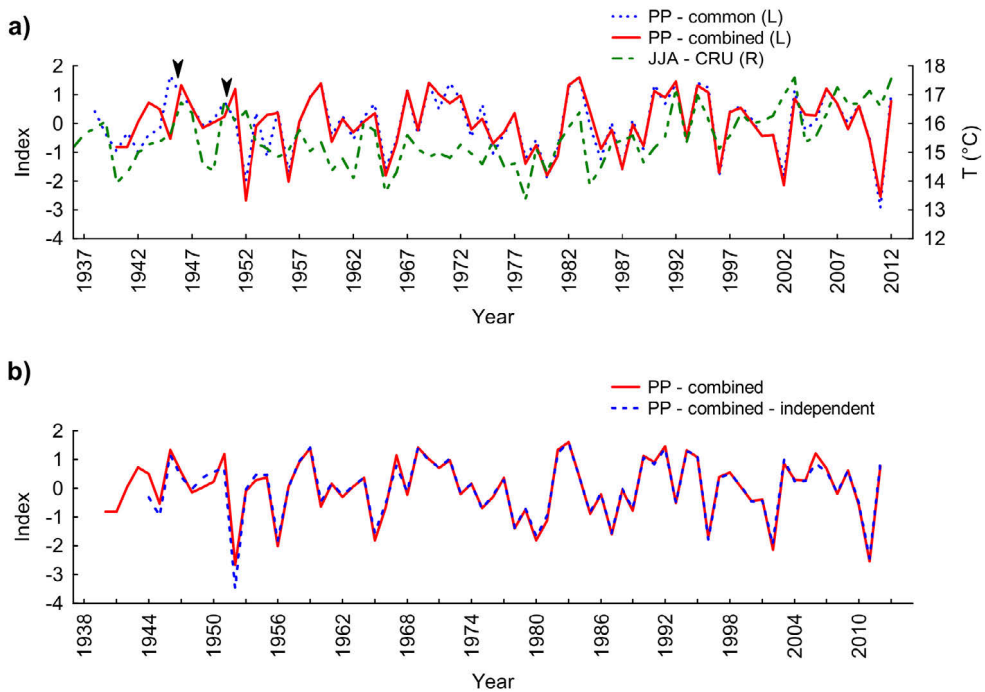
Comparison of the mean curve constructed by the combined dating method and the mean curve constructed by the graphical method for the PP site (Fig. 4a) shows that both methods provide consistent results for the last 40–50 calendar years. Correlations between the temperature records and common graphical method suddenly drop and are consistently lower in comparison with the moving correlations of the combined dating method. The combined dating method also improves the empirical signal strength statistics of the mean chronology (Rbar increases by 0.07 and EPS by 0.02).

To validate the combined dating method, another dendrochronologist independently applied the procedure

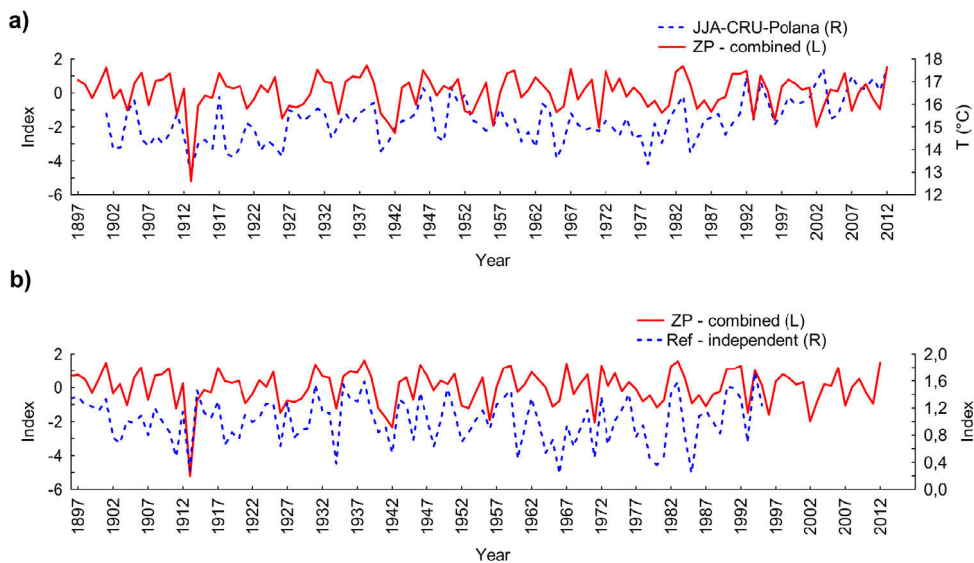
to all 11 tree-ring series from the PP dataset (Fig. 4b). By visual examination of the wood, assigning and recording marker rings and prominent growth patterns the dendrochronologist was able to construct a reference curve that coincides with our reference curve (no difference in Rbar and EPS statistics). Additionally, the reference chronology for the Poľana Mt. was checked for dating against the independent reference curve from the Vtáčnik Mts. (Dittmar *et al.*, 2003). The reference chronology Poľana was concurrent with both the climatic record and the independent reference chronology Vtáčnik (Fig. 5). Finally, the applicability of the method was validated on the series originated from only one single stand, in which 13 cores were selected to construct a tentative reference curve (for statistical characteristics, see Table 1). The correlation of the mean TRW series with precipitation sums from June–August was significant,  $r = 0.36$  (correlation of the indexed series vs. the master series from COFECHA was  $r = 0.50$ ). As the correlation was considered sufficiently high, June–August precipitation sums were utilized as a reliable independent reference. Once again the constructed reference chronology was checked against the independent reference chronology from Žiar n. H./Štiavnické Mts. (Dittmar *et al.*, 2003). The constructed tentative reference curve Veľké Pole coincided with both the climatic record and the independent reference chronology (Fig. 6).



**Fig. 3.** Monthly circumference increments (%) of beech trees at PP as measured with dendrometers during the vegetation periods 2007–2013. 50% (38–59%) of annual increment is produced in July and near by 100% (93–98%) of the annual increment is produced from June, July and August.



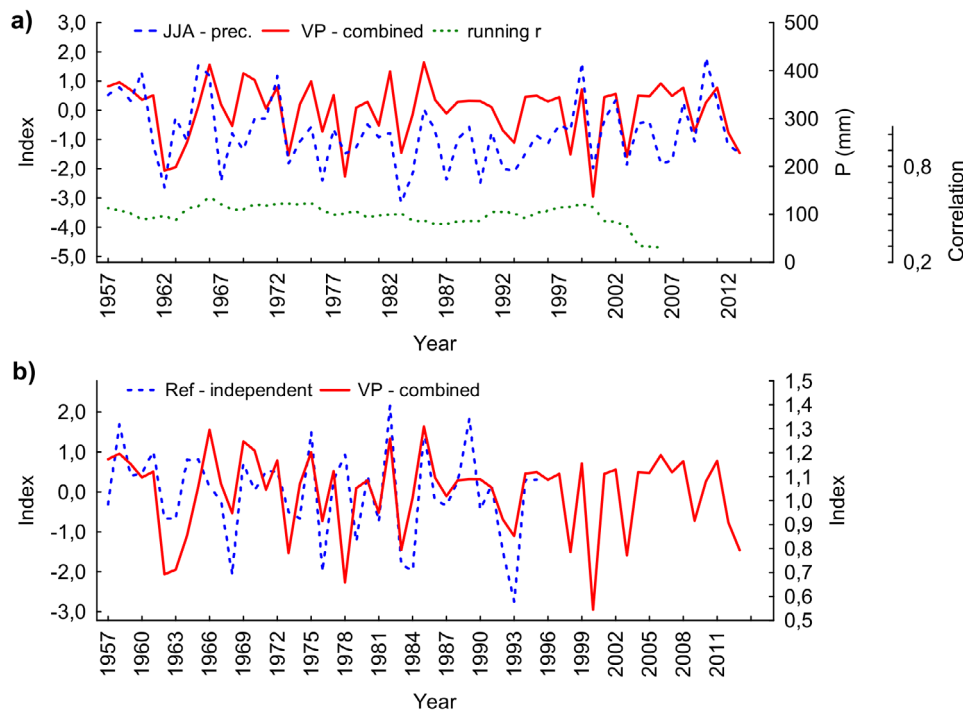
**Fig. 4.** Interpolated CRU TS3.21 mean JJA temperature series and indexed chronology for the PP site; a) arrows indicate a one-year shift in the chronology when comparing the cross-dating of the same material with the common graphical method (PP-common;  $R_{bar} = 0.408$ ,  $EPS = 0.884$ ) and with the proposed combined dating method (PP-combined;  $R_{bar} = 0.479$ ,  $EPS = 0.902$ ); there is an agreement between cross-dating by both methods up to approximately 1956 from there on, discrepancies in dating are evident. b) Comparison of indexed chronology for the PP site established by two independent dendrochronologists through application of the combined dating method (PP-combined-independent;  $R_{bar} = 0.482$ ,  $EPS = 0.903$ ).



**Fig. 5.** Indexed chronologies for the ZP site compared to a) a mean JJA temperature series, and b) to independent reference chronology from Dittmar et al. (2003).

In addition, the evidence of the dating ability of the combined dating method was validated using light microscopy. Three cores from ZP were taken from suppressed, slow-grown beech trees with very narrow rings (Fig. 7). The TRW series often contained more than one problematic segment for which correct visual detection of the number and borders of the rings was impossible. If cross-dating is applied using the common graphical methods, such cores are frequently considered intractable and excluded from further investigation.

After inspection of the micro-section the number of rings were counted and measured. The comparison of an established chronology and the single tree-ring series revealed the problematic segment (Fig. 7a). The combined dating method indicated 8 missing rings confirmed by micro-sectioning (Fig. 7b). The possible explanation of this issue is that suppressed sensitive trees exhibited repeatedly reductions in growth lasting 5–8 years.



**Fig. 6.** Indexed mean series for VP site compared to a) a mean JJA precipitation series, and b) to an independent reference chronology from Dittmar *et al.* (2003). The green curve in (a) shows 30-year running correlations between mean series (VP site) and JJA precipitation sum records reaching on average  $r = 0.5$  with a range of values from 0.61 to 0.29 (at the end of the series).

#### 4. DISCUSSION

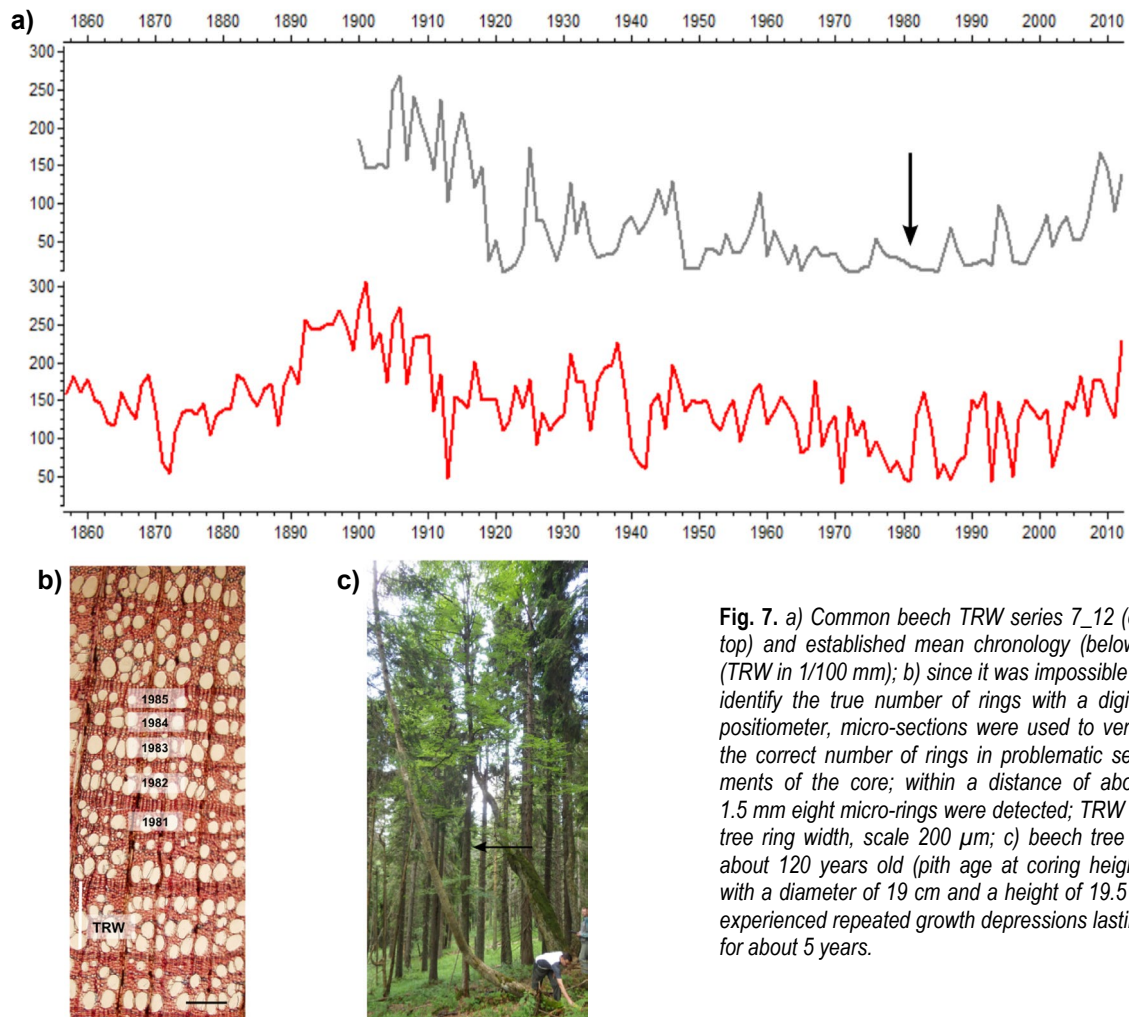
The core idea of the proposed cross-dating approach is the validation of uncertain subjective decisions in dating of the tree ring series. The method especially applies in cases of unclear TRW boundaries, frost rings, intra-annual growth pulses, ring wedging, missing or micro-rings, *etc.* It relies on the assumption that if TRW series or working chronology is misdated, its correlation with climate is essentially reduced, although, in reality, climate variability is objectively incorporated into TRWs. This simple idea is strongly supported by Esper *et al.* (2013), whose findings clearly suggest that the systematic shift in dating in the working reference chronology would be accompanied by either very low or no correlation with climate.

The proposed cross-dating approach is to simplify and verify the subjective decision of the researcher regarding the visual assessment of tree-ring boundaries. In general, for each tree ring there is five possibilities affecting the dating (insert, join, delete, divide and leave without change). For example, in the 30-year segment with only, let's say, 4 problematic boundaries there exist in total  $5^4 = 625$  combinations of possible decisions. A large sampling design is thus required to explicitly capture complicated spatial patterns of climate-growth relationships even for relatively small geographic areas (Büntgen *et al.*, 2010). The uncertainty of correct dating grows exponentially in the absence of independent reference

chronology combined with small available dataset and even a relatively short sequence of problematic rings can cause “dating collapse”. Situations when TRW samples are collected in one research plot in the region are, however, frequent. For such cases, the proposed method may be essential to reach successful cross-dating.

Extensive research is needed especially for the shade-tolerant beech as one of the main tree species in Europe, which often grows in understorey of the mixed stands on boundaries of its natural range (i.e. climate sensitive sites). Although some reference chronologies were developed for conifers in the region, their climate-growth responses often differ from that of broadleaved trees, even in the same locality (Castagneri *et al.*, 2014; Hartl-Meier *et al.*, 2014). Therefore, many reference chronologies are to be constructed based on a large number of TRW series for each distinct site in the region. Such extensive sampling is, however, costly and time consuming.

Under such circumstances it is very convenient to use freely or easily available instrumental records as an alternative reference chronology. One option can be using the climate records from the nearest meteorological stations. However, the proposed method does not require very precise climate data for the each sampling point. As was shown in our study, gridded CRU TS, a freely available climatic series, was sufficient for cross-dating and has already been used in many dendroclimatological studies in other European regions (e.g. Babst *et al.*, 2013; Büntgen *et al.*, 2007, 2009, 2013).



**Fig. 7.** a) Common beech TRW series 7\_12 (on top) and established mean chronology (below), (TRW in 1/100 mm); b) since it was impossible to identify the true number of rings with a digital positioner, micro-sections were used to verify the correct number of rings in problematic segments of the core; within a distance of about 1.5 mm eight micro-rings were detected; TRW — tree ring width, scale 200  $\mu\text{m}$ ; c) beech tree of about 120 years old (pith age at coring height) with a diameter of 19 cm and a height of 19.5 m experienced repeated growth depressions lasting for about 5 years.

The instrumental time series is used to control the subjective decisions of the researcher. The climate records partly replace the role of working reference chronology (which cannot be reliably constructed using a very small sample size) and partly serve as a validation tool similar to an independent reliable dated regional chronology (which might not be available for the site). In general, the climate records mainly serve for the identification of suspicious segments with reduced climate-growth correlation, suggesting a misdating, which should be reassessed and re-inspected on the wood.

However, a concern of a “cycling error” (using climate records for validation of tree-ring sequences and then using these sequences for climate reconstructions) could arise. But indeed, this possibility is almost excluded if two simple conditions are met: (i) any purposive adjustment of the measured tree-ring widths in order to artificially increase the correlations with climate without visual justification on the wood are not allowed and per se (ii) manipulation with available climate records is fully excluded. When trial shifts of dating position of the seg-

ment does not result in a correlation increase, the low correlation with climate is accepted as a fact and any deliberate interventions to TRW measurements are not justified and thus not allowed. On the contrary, employing climatic records for cross-dating can be considered as the first phase in constructing a dendroclimatic model and can improve the extraction of the climate signal from tree-ring series.

Anyhow, the method is based on the assumption that the relationship between climate and tree growth has a non-zero magnitude and is time-stable (Fritts, 1976). Although significant and temporally stable correlations when testing temporal coherence between TRW, maximum latewood density (MXD) and observed JJA summer temperatures in chronologies from cold environments have been demonstrated (e.g. Esper *et al.*, 2013). Several studies reported a change in climate sensitivity and temporal stability toward the end of the 20<sup>th</sup> century (e.g. Briffa *et al.*, 1998; Di Filippo *et al.*, 2007; Leal *et al.*, 2008; Bošel’a *et al.*, 2014b). This deviation may thus cause a problem in the application of the com-



bined dating method. For instance, as correlation between TRW and temperature decreases, temperature variation is no longer sufficiently recorded in the tree rings and another climatic variable has to be used for successful cross-dating. As was illustrated using the dataset VP, the combined method is not specifically limited to the use of temperature measurements. Any reliable dated climatic instrumental record can be used instead. Therefore, when a tree-ring series loses the sensitivity to the originally selected climate variable, it can be replaced by another available alternative.

Adverse (cool, rainy and short) growing seasons in temperature limited environments may lead to the formation of very narrow rings (micro-ring, Hantemirov *et al.*, 2004), so may go completely undetected in all sampled trees. In this regard the proposed method allows the detection of the missing rings throughout the entire sample set. The ability of the method to reveal missing rings is sufficient allowing detecting even the whole sequence of missing rings (as it was proved on the core of the most problematic suppressed tree). The correct number of missing rings on the tree was obtained by micro-sectioning.

Many of the problematic trees are suppressed trees for which the exclusion is acceptable when considering that unreliable cross-dating would introduce a lot of noise to the chronology (Lorimer *et al.*, 1999). On the other hand, the suppressed trees are frequently demanded for eco-production analyses (Nehrbass-Ahles *et al.*, 2014) and facts derived from suppressed trees could provide valuable deep-insight information about the stand development (especially disturbance history).

If core exclusion is unavoidable, the additional coring of more trees from particular or nearby localities should be employed. However, both approaches – microsectioning and/or additional coring – are rather costly and time consuming. From this point of view, the combined cross-dating method has a good potential for better exploitation of empirical material.

## 5. CONCLUSIONS

The proposed combined method resulted in the successful construction of a reference chronology despite the small sample size and the absence of the regional chronology. The proposed dating technique demonstrates its ability to markedly facilitate the process of cross-dating, particularly of trees from limiting environments or suppressed trees. The method allows the detection of rings that are completely missing or hardly identifiable.

The method was applied to ring series of living beech trees from sites where temperature or precipitation was identified as the most prominent growth limiting factor. The applicability of our approach thus needs further testing for different environments and tree species where other climate factors drive the tree growth. However, since the method has been successful for small datasets of

under-canopy trees and problematic species (beech), the reasonable assumption exists that it will likely work for larger datasets that include species with better recognizable annual rings.

Up-to-date there is no published or generally accepted dating method that is fully independent of human bias. According to Cook and Kairiukstis (1990) “*the operator will never have relief from his responsibility in synchronization of tree ring series*”. The same is true for the method proposed in this study. Any final decision on the assignment of calendar years in the absence of a reference chronology depends mostly on the dendrochronologist, but the proposed method has the potential to be a useful tool increasing the confidence of the operator in his dating decisions.

## ACKNOWLEDGMENTS

This study was funded by the Slovak Research and Development Agency under the contracts No. APVV-0423-10, No. APVV-0111-10, No. APVV-0480-12 and No. APVV-14-0014 and also by the the Scientific Grant Agency of the Ministry of Education, Science, Research and Sport of the Slovak Republic under the project 1/0953/13. The additional support was received from the project of the National Agency of Agricultural Research NAZV of the Czech Republic under the contract No. QJ1320230. Authors are grateful to Alan Crivellaro for the introduction to wood anatomy and helping with the preparation of cross-sections as well as to Christoph Dittmar for providing the independent reference chronology. We would also like to thank to Jacob Poterf for final language editing as well as to three anonymous referees whose comments helped us to improve the manuscript.

## APPENDIX A

The main idea behind the new approach lies in a preliminary dating of marker rings and characteristic ring sequences (patterns) visually identified on the wood *before* the exact measurement of each individual TRW. Correct assigning of marker rings/patterns is subsequently independently validated by a moving correlation between the constructed working reference curve and instrumental climate record *after* the exact TRW measurements. The idea of independent validation by an external information source — instrumentally measured climate records dated with absolute certainty — was investigated. The combined dating method consists of the following steps:

- 1) Before the exact TRW measurements, the visual inspection of TRW boundaries on the best readable cores in a direction from bark to pith linked to the identification of the first marker ring (unusually narrow or wide) or first marker sequence of rings (e.g. narrow-narrow-wide). The marker rings/sequences

are “unusual” rings or characteristic patterns of unusual rings repeatedly appearing on the majority of available core samples.

- 2) Consequently, the attempt to assign exact calendar year to the first marker ring/pattern through counting their number from bark on available cores is done. The counted number could differ on different cores even over a relatively short time span from a known date at the time of coring. This is a consequence of occurrence of unclear TRW boundaries, frost rings, intra-annual growth pulses, ring wedging, missing or micro-rings, *etc.* Therefore, the operator has to decide the uncertainty and assign a particular calendar year to a marker ring/sequence subjectively, usually as the calendar year repeatedly identified on majority of individual cores in dataset.
- 3) The cores, where number of rings between bark and first preliminary dated marker ring/sequence no longer correlate, are visually reassessed. The preliminary identified ring boundaries are re-inspected and new decisions about the problematic boundaries of consecutive tree rings are made. The re-assessed boundaries are newly marked on wooden base before the exact measurement of TRW. This leads to aligning the number of tree rings in the first time interval across the samples before the measurement. However, doubts about the correct dating of first marker ring/sequence position due to originally mixed results from different core samples may still persist.
- 4) In order to align the total number of counted rings across the individual cores throughout the time available, the operator repeats the procedure for each subsequent marker ring or pattern. In this process the date is established by the most frequent number of counted rings between the marker rings/sequences in the dataset and additional visual re-inspection of problematic cores occurs.
- 5) After completion of visual identification, marking and preliminary dating of ring boundaries on wooden base, TRWs are exactly measured and a working reference curve is constructed. The quality of measurements could be checked with COFECHA in order to eliminate possible raw measurement errors.
- 6) Despite this sophisticated technique, uncertainty about correct dating of marker rings/patterns (and consequently of all tree rings) could persist. Typically, it increases with a reduction in the core sampling size, TRW visibility and increased distance from bark. If the operator misdates the position of the first marker ring, the dating error will be systematically carried over dating of all additional TRWs, including the dating of all other marker ring positions. Thus, errors in dating of marker rings are to be checked and corrected based on the comparison with the absolutely dated instrumental climate reference curve. The principle concept regarding this process is an assumption that if working reference chronology is

misdated, its correlation with climate is undetectable, although climate variability is objectively incorporated into TRW.

- 7) Preliminary constructed working reference curves can be checked against independent climatic records in the way that moving correlation coefficients between mean reference and climate values are calculated (15 and 30 year moving window was used after preliminary tests) and whenever correlation suddenly drops below “usual” value (approximately twice below the previous value), probably misdated segments of working reference curves are indicated.
- 8) Therefore, visual re-inspection of all samples and the new decision on dating of corresponding marker rings/sequences of possibly misdated segments has to occur. The TRW measurements and boundaries should be repeated from the misdated time position for each core in the sample and the new working reference curve has to be constructed and checked against the climate reference curve.
- 9) The procedure can be repeated until the moving correlations for a whole available time sequence in dataset are without any unusual drops explainable by misdating. Or when any visually justified alternative decisions about unclear boundaries TRW in seemingly misdated segments do not yield a significant increase in moving correlation values.

The approach is repeating in nature — after detecting a low correlation between the preliminary reference curve and climate records, problematic segments and individual series are identified, re-dated and re-measured and a new working reference is constructed. Re-dating and re-measurements reveal missing rings (micro-rings) and allow for the correction of uncertain tree-ring boundaries in problematic segments presented almost on every core sample. In the same time, revealing and highlighting the hidden correlation of TRW and absolutely dated climate records is used for a making cross-dating procedure more independent to human will. Consequently, the scientific quality of following dendroclimatic or dendroecological studies can be improved.

## REFERENCES

- Babst F, Poulter B, Trouet V, Tan K, Neuwirth B, Wilson R, Carrer M, Grabner M, Tegel W, Levanić T, Panayotov M, Urbinati C, Bouriaud O, Ciais P and Frank D, 2013. Site- and species-specific responses of forest growth to climate across the European continent. *Global Ecology and Biogeography* 22(6): 706–717, DOI 10.1111/geb.12023.
- Bošefa M, Petráš R, Sitková Z, Priwitzer T, Pajčík J, Hlavatá H, Sedmák R and Tobin B, 2014a. Possible causes of the recent rapid increase in the radial increment of Silver fir in the Western Carpathians. *Environmental Pollution* 184: 211–221, DOI 10.1016/j.envpol.2013.08.036.
- Bošefa M, Sedmák R, Sedmáková D, Marušák R and Kulla L, 2014b. Temporal shifts of climate-growth relationships of Norway spruce as an indicator of health decline in the Beskids, Slovakia. *Forest Ecology and Management* 325: 108–117, DOI 10.1016/j.foreco.2014.03.055.

- Briffa KR, Schweingruber FH, Jones PD, Osborn TJ, Shiyatov SG and Vaganov EA, 1998. Reduced sensitivity of recent tree-growth to temperature at high northern latitudes. *Nature* 391: 678–682, DOI 10.1038/35596.
- Büntgen U, Frank DC, Kaczka RJ, Verstege A, Zwijacz-Kozica T and Esper J, 2007. Growth responses to climate in a multi-species tree-ring network in the Western Carpathian Tatra Mountains, Poland and Slovakia. *Tree Physiology* 27(5): 689–702, DOI 10.1093/treephys/27.5.689.
- Büntgen U, Brázdil R, Frank D and Esper J, 2009. Three centuries of Slovakian drought dynamics. *Climate Dynamics* 35(2–3): 315–329, DOI 10.1007/s00382-009-0563-2.
- Büntgen U, Franke J, Frank D, Wilson R, González-Rouco F and Esper J, 2010. Assessing the spatial signature of European climate reconstructions. *Climate Research* 41: 125–130, DOI 10.3354/cr00848.
- Büntgen U, Tegel W, Nicolussi K, McCormick M, Frank D, Trouet V, Kaplan JO, Herzig F, Heussner KU, Wanner H, Luterbacher J and Esper J, 2011. 2500 years of European climate variability and human susceptibility. *Science* 331(6017): 578–582, DOI 10.1126/science.1197175.
- Büntgen U, Kyncl T, Ginzler C, Jacks DS, Esper J, Tegel W, Heussner KU and Kyncl J, 2013. Filling the Eastern European gap in millennium-long temperature reconstructions. *Proceedings of the National Academy of Sciences of the United States of America* 110(5): 1773–1778, DOI 10.1073/pnas.1211485110.
- Castagneri D, Nola P, Motta R and Carrer M, 2014. Summer climate variability over the last 250 years differently affected tree species radial growth in a mesic *Fagus-Abies-Picea* old-growth forest. *Forest Ecology and Management* 320: 21–29, DOI 10.1016/j.foreco.2014.02.023.
- Climexp.KNMI, 2014. <http://climexp.knmi.nl>. Accessed 2014-04-18.
- Cook ER and Kariukstis LA (eds.), 1990. *Methods of Dendrochronology: Applications in the Environmental Sciences*. Kluwer Academic Publishers, Dordrecht: 394pp.
- DeRose JR and Gardner RS, 2010. Technique to improve visualization of elusive tree-ring boundaries in aspen (*Populus tremuloides*). *Tree-Ring Research* 66(1): 75–78, DOI 10.3959/2009-11.1.
- Di Filippo A, Biondi F, Čufar K, de Luis M, Grabner M, Maugeri M, Saba EP, Schirone B and Piovesan G, 2007. Bioclimatology of beech (*Fagus sylvatica* L.) in the Eastern Alps: spatial and altitudinal climatic signals identified through a tree-ring network. *Journal of Biogeography* 34(11): 1873–1892, DOI 10.1111/j.1365-2699.2007.01747.x.
- Dittmar C, Zech W and Elling W, 2003. Growth variations of common beech (*Fagus sylvatica* L.) under different climatic and environmental conditions in Europe: a dendroecological study. *Forest Ecology and Management* 173: 63–78, DOI 10.1016/S0378-1127(01)00816-7.
- Esper J, Büntgen U, Luterbacher J and Krusic PJ, 2013. Testing the hypothesis of post-volcanic missing rings in temperature sensitive dendrochronological data. *Dendrochronologia* 31(3): 216–222, DOI 10.1016/j.dendro.2012.11.002.
- Fritts HC, 1976. *Tree Rings and Climate*. Academic Press, London: 567pp.
- Fritts HC and Swetnam TW, 1989. Dendroecology: A tool for evaluating variations in past and present forest environments. *Advances in Ecological Research* 19: 111–188.
- Gärtner H and Schweingruber FH, 2013. *Microscopic Preparation Techniques for Plant Stem Analysis*. WSL Birmensdorf, Switzerland: 78pp.
- Gärtner H, Lucchinetti S and Schweingruber FH, 2014. New perspectives for wood anatomical analysis in dendrosciences: The GSL1-microtome. *Dendrochronologia* 32(1): 47–51, DOI 10.1016/j.dendro.2013.07.002.
- Gedalof ZE and Berg AA, 2010. Tree ring evidence for limited direct CO<sub>2</sub> fertilization of forests over the 20th century. *Global Biogeochemical Cycles* 24(3): GB3027, DOI 10.1029/2009GB003699.
- Grissino-Mayer HD, 2001. Evaluating crossdating accuracy: a manual and tutorial for the computer program COFECHA. *Tree-Ring Research* 57: 205–221.
- Hantemirov RM, Gorlanova LA and Shiyatov SG, 2004. Extreme temperature events in summer in northwest Siberia since AD 742 inferred from tree rings. *Palaeogeography, Palaeoclimatology, Palaeoecology* 209(1): 155–164.
- Harris I, Jones PD, Osborn TJ and Lister DH, 2014. Updated high-resolution grids of monthly climatic observations - the CRU TS3.10 Dataset. *International Journal of Climatology* 34: 623–642, DOI 10.1002/joc.3711.
- Hartl-Meier C, Dittmar C, Zang C and Rothe A, 2014. Mountain forest growth response to climate change in the Northern Limestone Alps. *Trees* 28(3): 819–829, DOI 10.1007/s00468-014-0994-1.
- Holmes LR, 1983. Computer-assisted quality control in tree-ring dating and measurement. *Tree-Ring Bulletin* 43: 69–78.
- Janiček R, 1994. User reference DAS (Dendrochronological analysis system): 53pp.
- Ježik M, Blaženec M, Střelcová K and Ditmarová L, 2011. The impact of the 2003–2008 weather variability on intra-annual stem diameter changes of beech trees at a submontane site in central Slovakia. *Dendrochronologia* 29(4): 227–235, DOI 10.1016/j.dendro.2011.01.009.
- Leal S, Eamus D, Grabner M, Wimmer R and Cherubini P, 2008. Tree rings of *Pinus nigra* from the Vienna basin region (Austria) show evidence of change in climatic sensitivity in the late 20th century. *Canadian Journal of Forest Research* 38(4): 744–759, DOI 10.1139/X07-189.
- Lebourgeois F, Bréda N, Ulrich E and Granier A, 2005. Climate-tree-growth relationships of European beech (*Fagus sylvatica* L.) in the French Permanent Plot Network (RENECOFOR). *Trees* 19: 385–401, DOI 10.1007/s00468-004-0397-9.
- Lorimer CG, Dahir SE and Singer MT, 1999. Frequency of partial and missing rings in *Acer saccharum* in relation to canopy position and growth rate. *Plant Ecology* 143: 189–202, DOI 10.1023/A:1009847819158.
- Maxwell RS, Wixom JA and Hessl AE, 2011. A comparison of two techniques for measuring and crossdating tree rings. *Dendrochronologia* 29(4): 237–243, DOI 10.1016/j.dendro.2010.12.002.
- Nehrbass-Ahles C, Babst F, Klesse S, Nötzli M, Bouriaud O, Neukom R, Dobbertin M and Frank D, 2014. The influence of sampling design on tree-ring-based quantification of forest growth. *Global Change Biology* 20(9): 2867–2885, DOI 10.1111/gcb.12599.
- Popa I and Kern Z, 2009. Long-term summer temperature reconstruction inferred from tree-ring records from the Eastern Carpathians. *Climate Dynamics* 32: 1107–1117, DOI 10.1007/s00382-008-0439-x.
- Rinn F, 2003. TSAP-Win. Time series analysis and presentation for dendrochronology and related applications. RINNTECH, Heidelberg.
- Schweingruber FH, 1983. *Der Jahrring. Standort, Methodik, Zeit und Klima in der Dendrochronologie. (Tree-ring, site, methodology, time and climate in dendrochronology)*. Haupt, Bern: 234pp.
- Schweingruber FH, 1988. *Tree Rings: Basics and Applications of Dendrochronology*. D. Reidel Publishing Co., Dordrecht, the Netherlands: 276pp.
- Speer JH, 2010. *Fundamentals of tree-ring research*. University of Arizona Press, Tucson: 368pp.
- Wigley TML, Briffa KR and Jones PD, 1984. On the average value of correlated time series, with applications in dendroclimatology and hydrometeorology. *Journal of Climate and Applied Meteorology* 23: 201–213, DOI 10.1175/1520-0450(1984)023<0201:OTAVOC>2.0.CO;2.
- Yamaguchi DK, 1991. A simple method for cross-dating increment cores from living trees. *Canadian Journal of Forest Research* 21: 414–416, DOI 10.1139/x91-053.